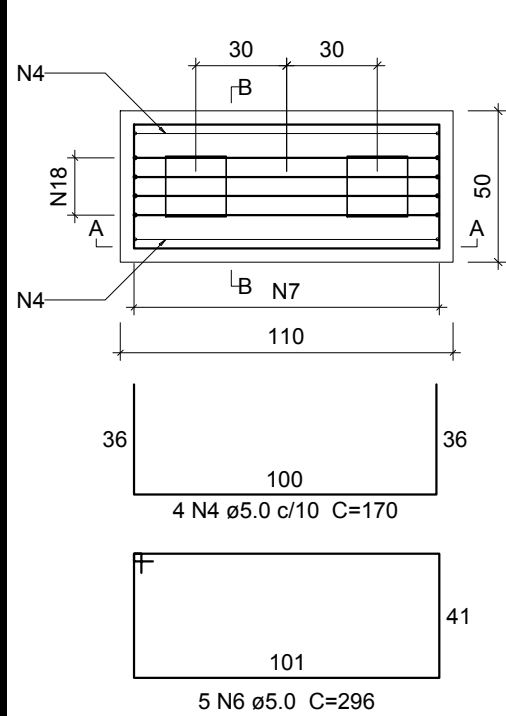
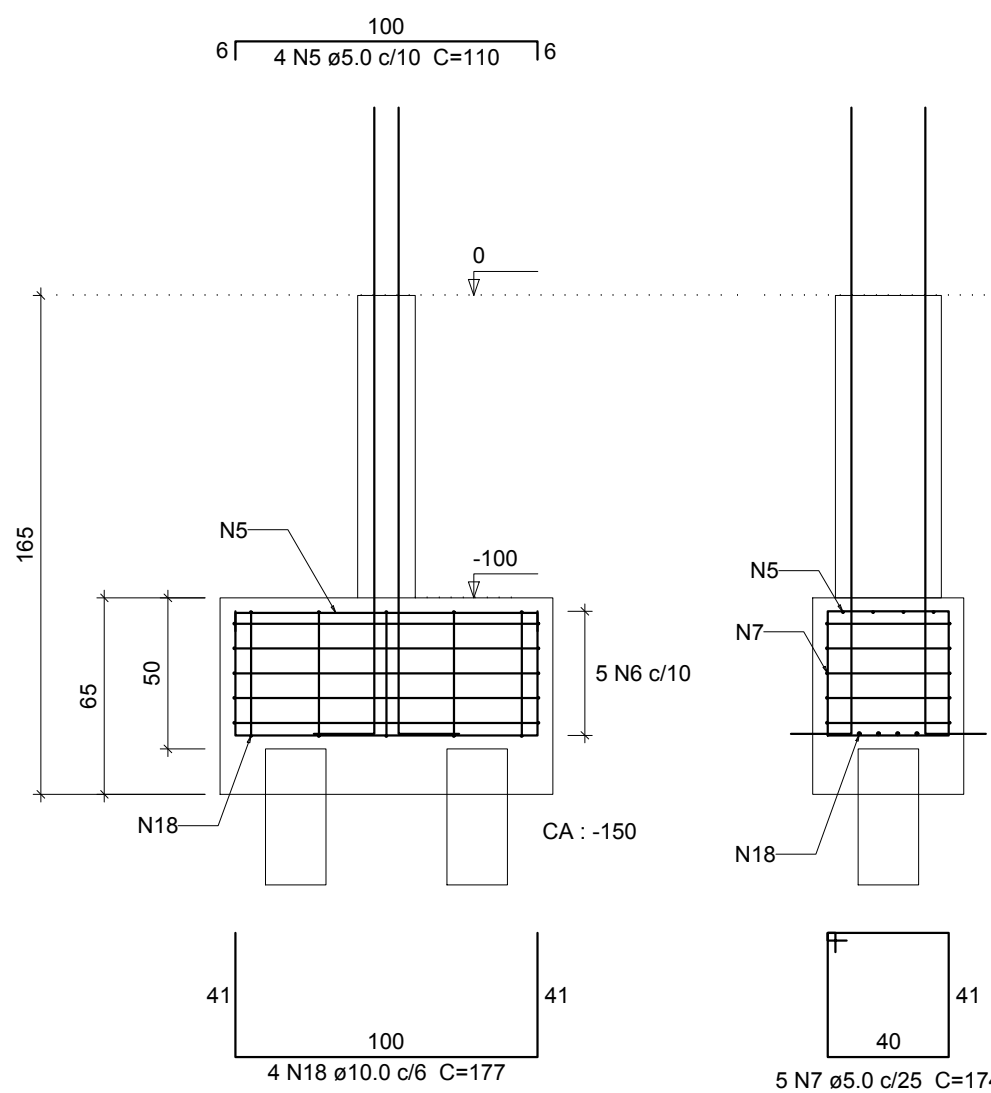


B10=B20  
2xPRE20

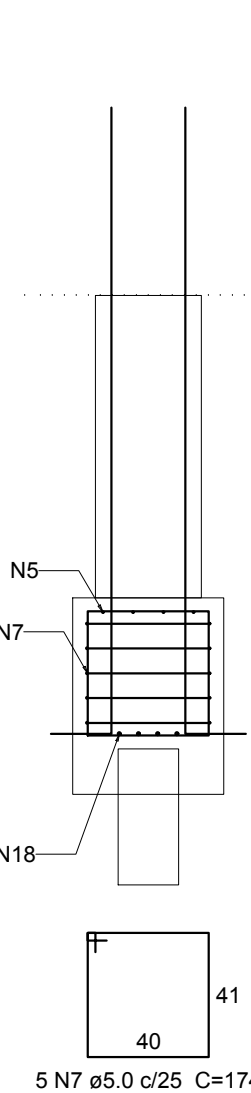
PLANTA  
ESC 1:25



CORTE A-A  
ESC 1:25

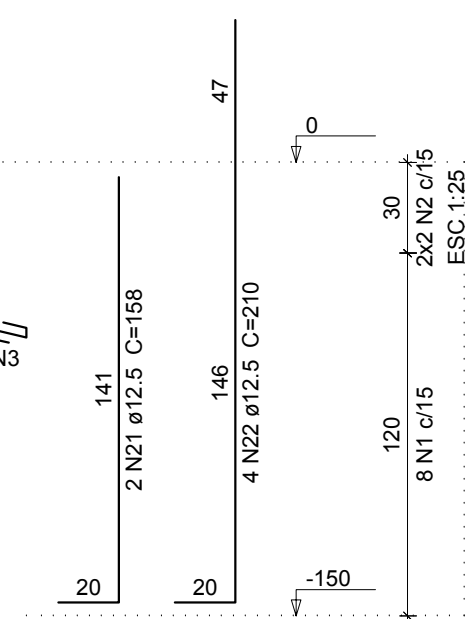
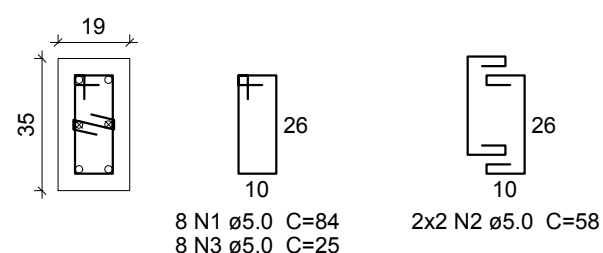


CORTE B-B  
ESC 1:25



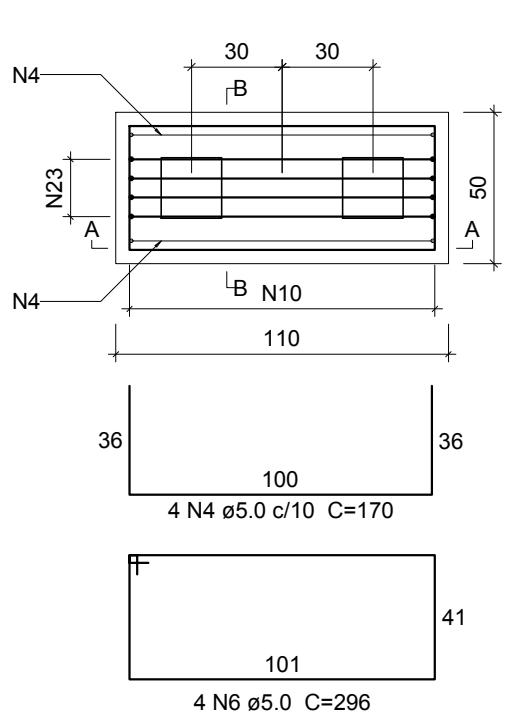
P10=P20

FUNDAÇÕES - L1  
ESC 1:20

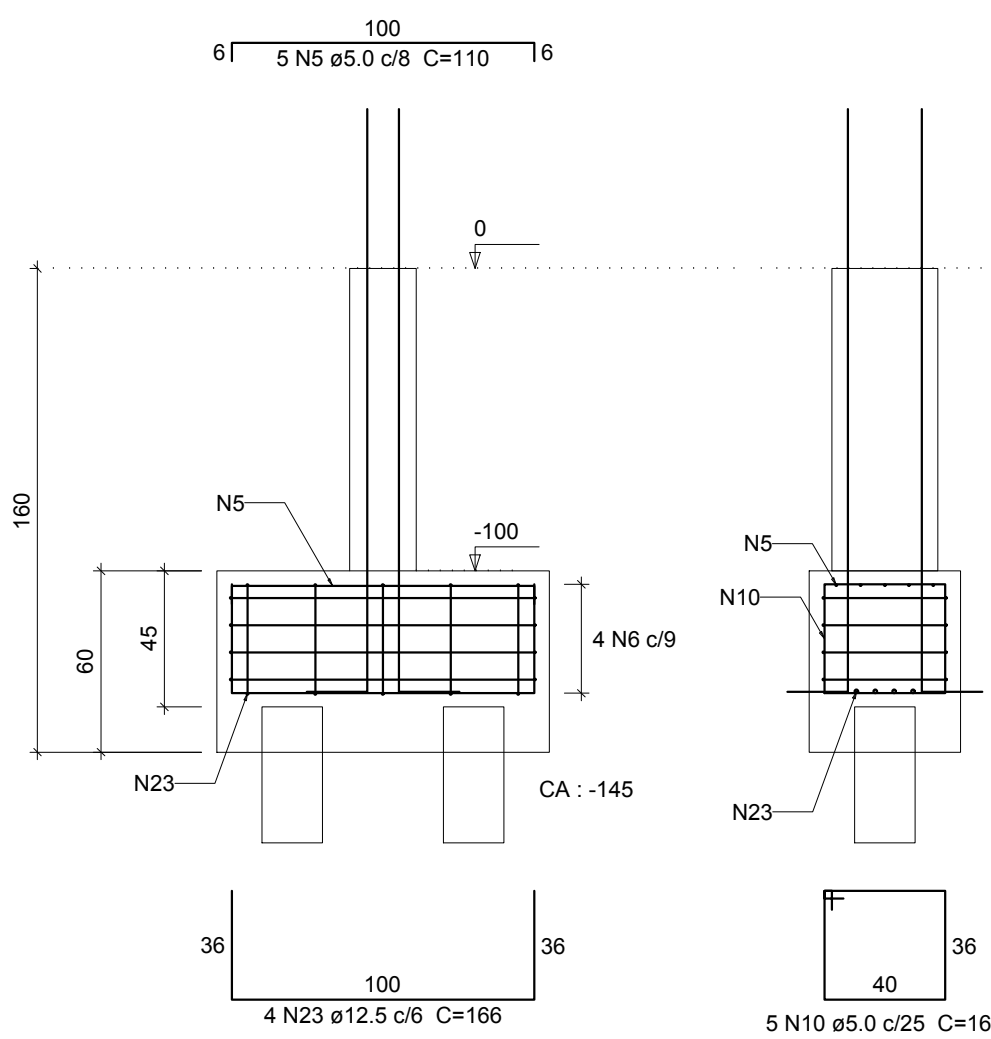


B14  
2xPRE20

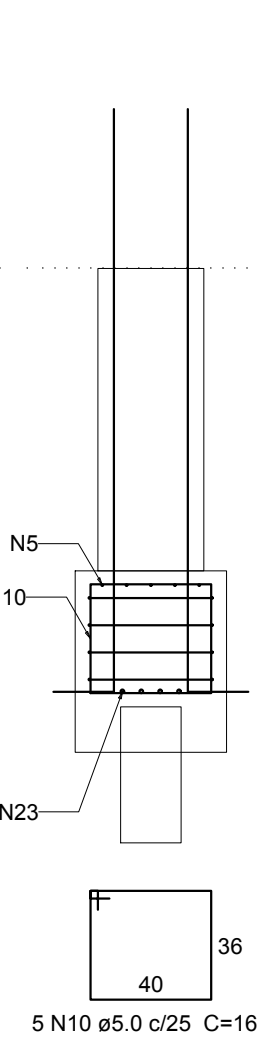
PLANTA  
ESC 1:25



CORTE A-A  
ESC 1:25

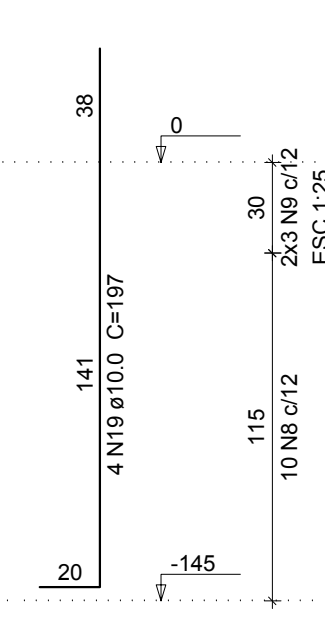
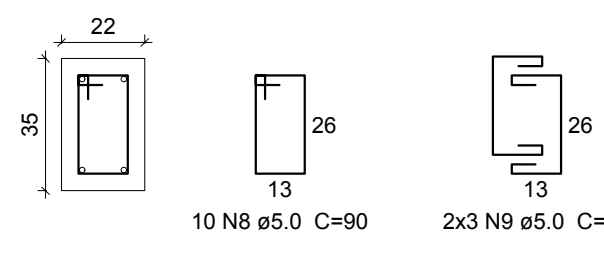


CORTE B-B  
ESC 1:25



P14

FUNDAÇÕES - L1  
ESC 1:20



Relação do aço

AÇO	N	DIAM (mm)	QUANT	C.UNIT (cm)	C.TOTAL (cm)
CA60	1	5.0	26	84	2184
	2	5.0	14	58	812
	3	5.0	20	25	500
	4	5.0	12	170	2040
	5	5.0	17	110	1870
	6	5.0	19	296	5624
	7	5.0	10	174	1740
	8	5.0	18	90	1620
	9	5.0	10	64	640
	10	5.0	5	164	820
	11	5.0	8	VAR	VAR
	12	5.0	9	VAR	VAR
	13	5.0	8	VAR	VAR
	14	5.0	7	VAR	VAR
	15	5.0	5	435	2175
	16	5.0	4	160	640
	17	5.0	5	154	770
CA50	18	10.0	8	177	1416
	19	10.0	4	197	788
	20	10.0	4	192	768
	21	12.5	4	158	632
	22	12.5	8	210	1680
	23	12.5	4	166	664
	24	12.5	12	238	2856
	25	12.5	4	158	624
	26	16.0	2	177	354
	27	16.0	6	242	1452

Resumo do aço

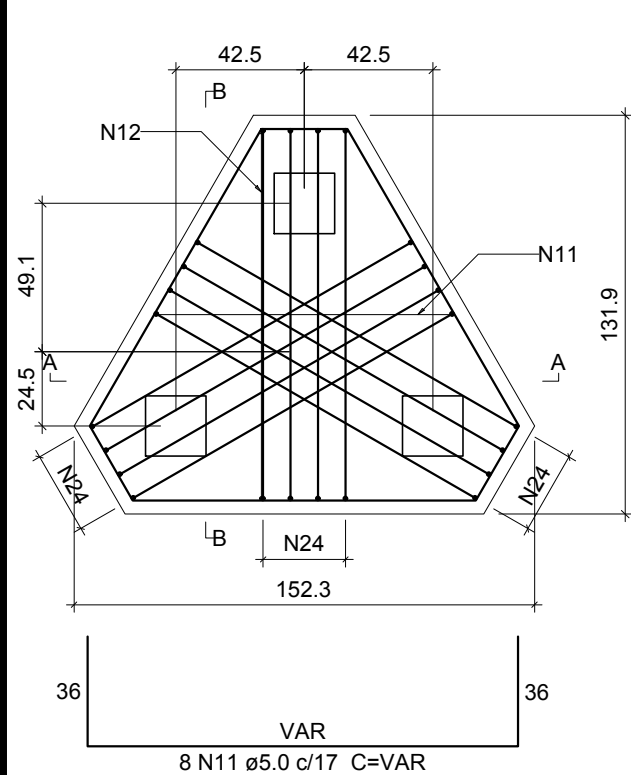
AÇO	DIAM (mm)	C.TOTAL (m)	PESO + 10 % (kg)
CA50	10.0	29.8	20.2
	12.5	64.6	68.4
	16.0	18.1	31.4
CA60	5.0	269.8	45.7
PESO TOTAL (kg)			
CA50	119.9		
CA60	45.7		

Volume de concreto (C-25) = 2.96 m³  
Área de forma = 20.07 m²

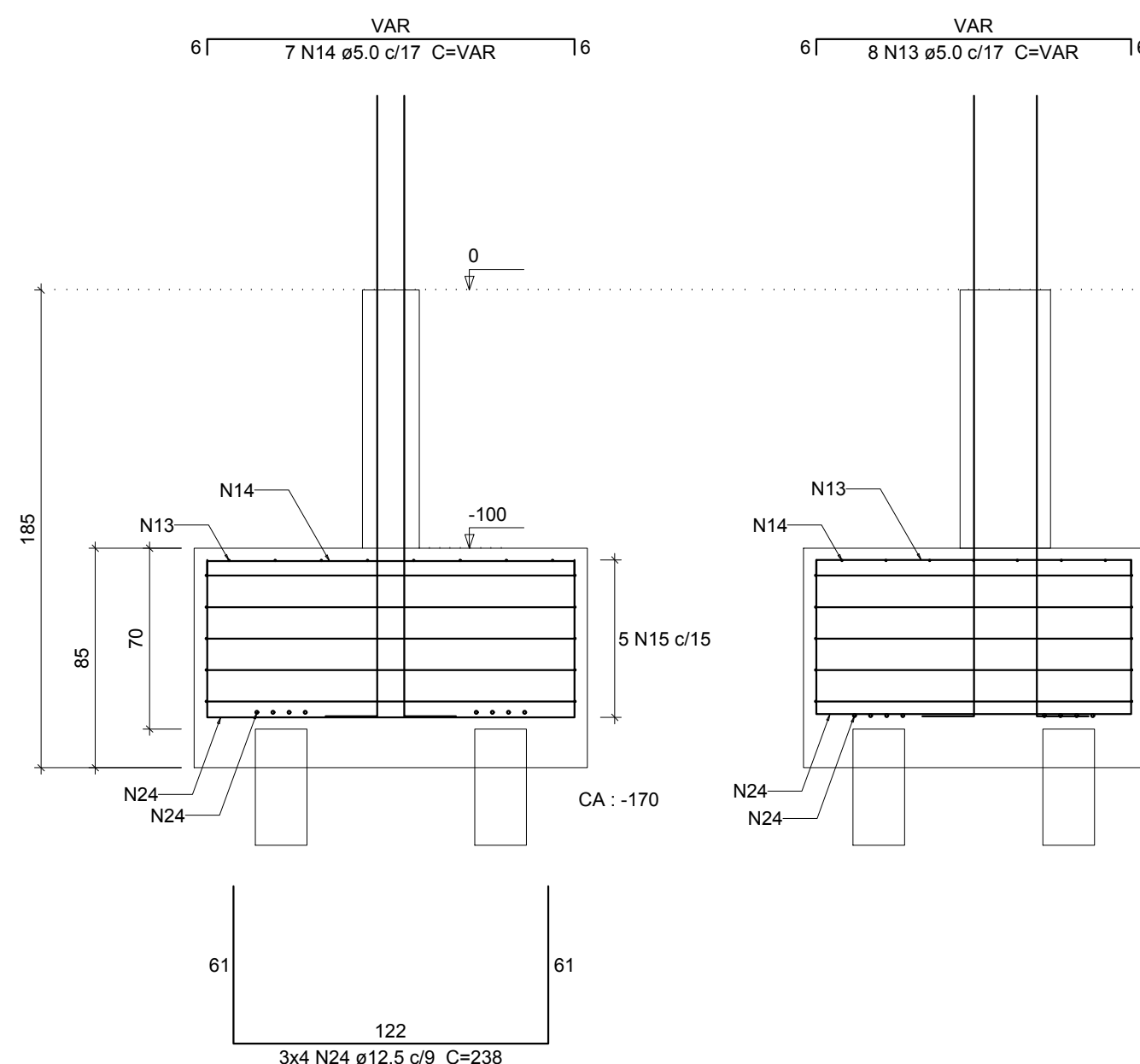
Estacas pré-moldadas cravadas seção quadrada 20x20 cm e profundidade de 10 metros cada. Capacidade total de carga das estacas de 45t.

B15  
3xPRE20

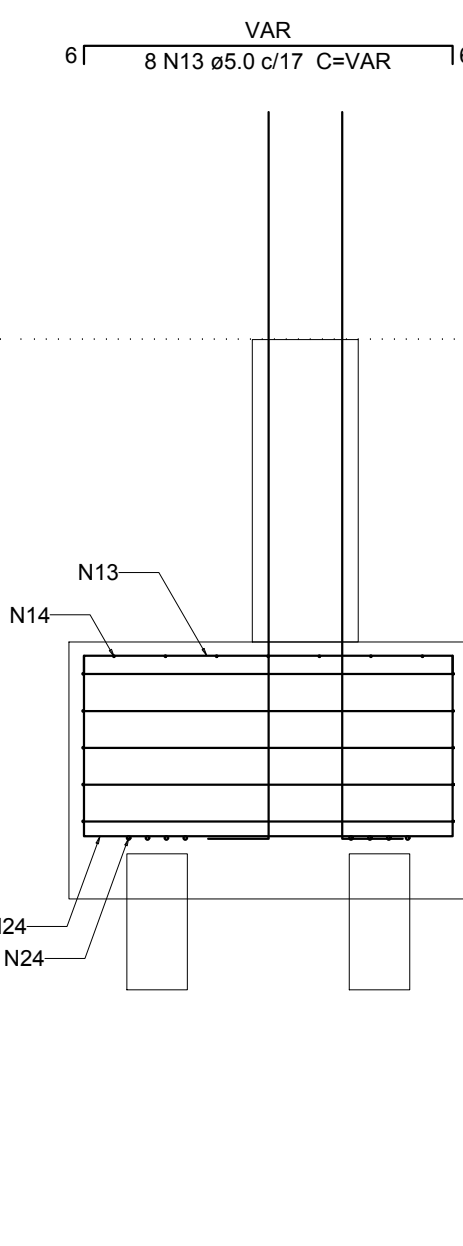
PLANTA  
ESC 1:25



CORTE A-A  
ESC 1:25

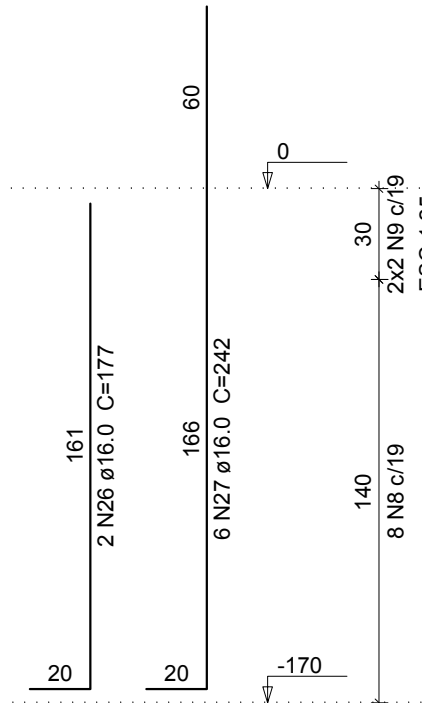
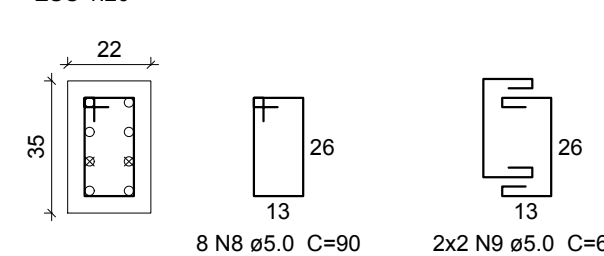


CORTE B-B  
ESC 1:25



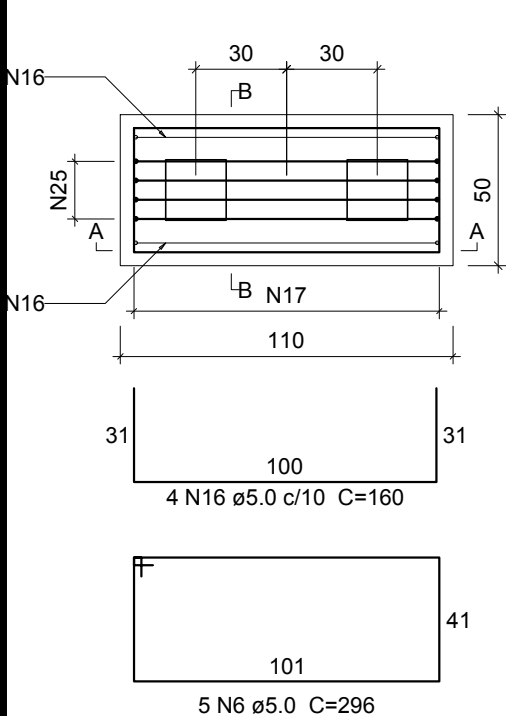
P15

FUNDAÇÕES - L1  
ESC 1:20

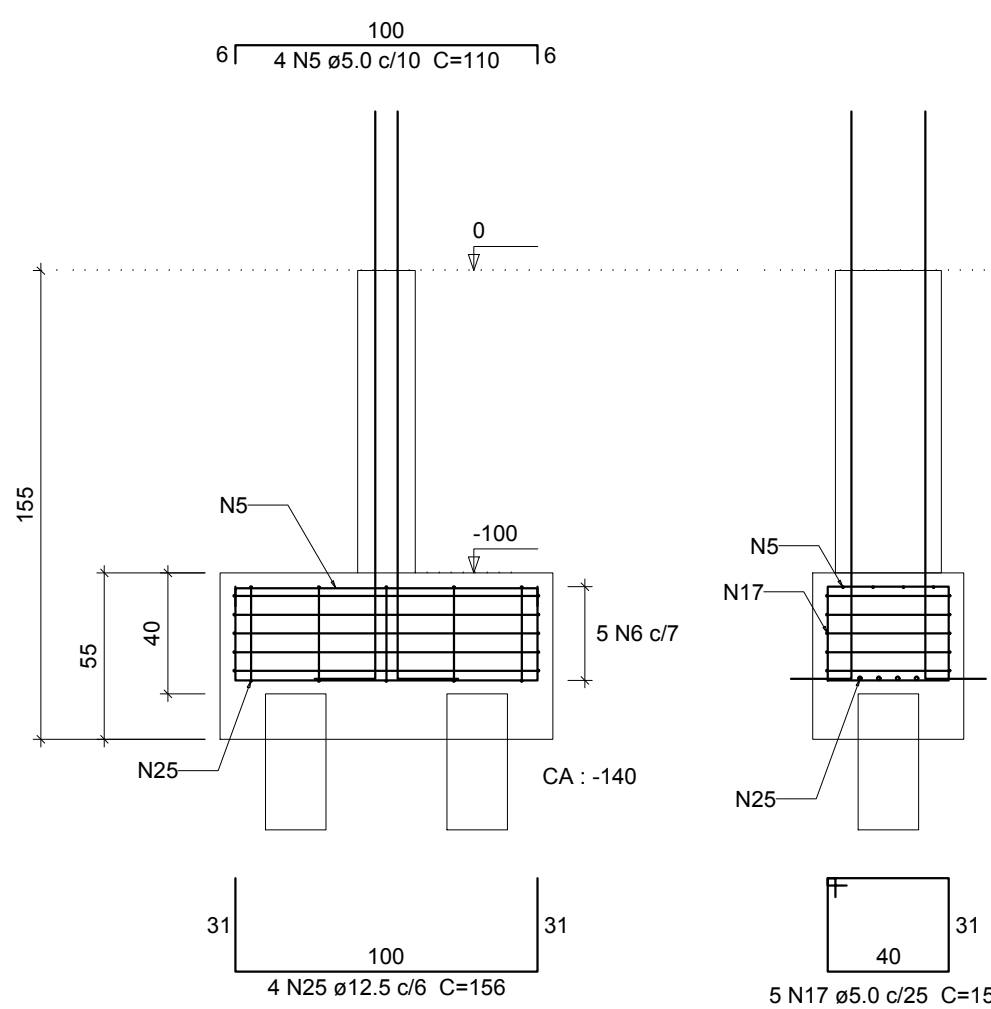


B16  
2xPRE20

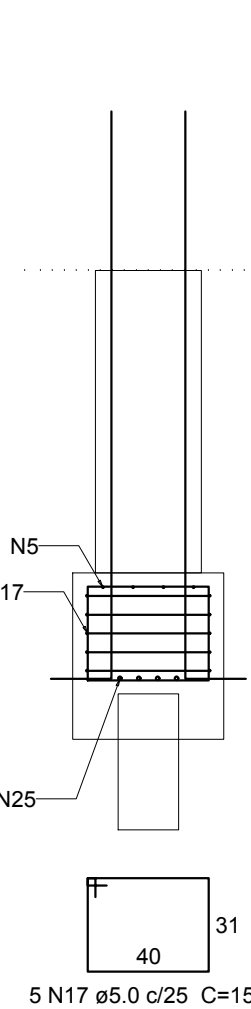
PLANTA  
ESC 1:25



CORTE A-A  
ESC 1:25

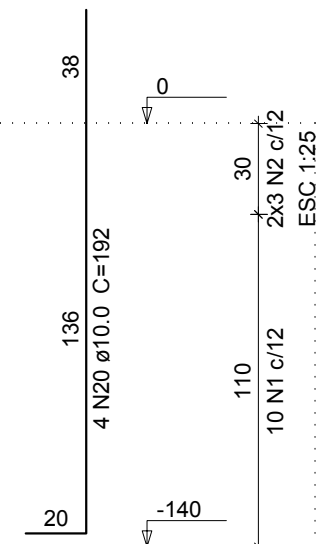
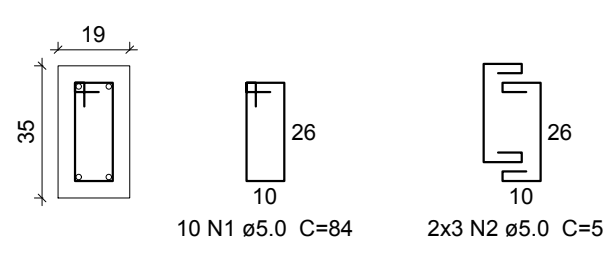


CORTE B-B  
ESC 1:25



P16

FUNDAÇÕES - L1  
ESC 1:20



PRÓ-REITORIA DE ADMINISTRAÇÃO  
COORDENAÇÃO DE ENGENHARIA E ARQUITETURA

Rua Esmeralda, 430 - Feixe Nova - Camobi - CEP 97110-767 - Santa Maria - Rio Grande do Sul.  
Telefone: (51) 3226-6630

OBRA: SALAS DE AULA E SANITÁRIOS/VESTIÁRIOS

LOCAL: IF FARROUPILHA - CAMPUS SANTO ÂNGELO

PROJETO: ESTRUTURAL PRÉDIO SANITÁRIOS

ÁREA: 662,73 m²

CONTEÚDO: FUNDAÇÕES

ESCALA: 1/50

PROPRIETÁRIO:

INSTITUTO FEDERAL FARROUPILHA

DATA: Março/2017

DESENHO: Cristina

RESPONSÁVEL:

ENG. CIVIL CRISTINA SILVA FELTRIM

PRANCHA: DET EST 01/19